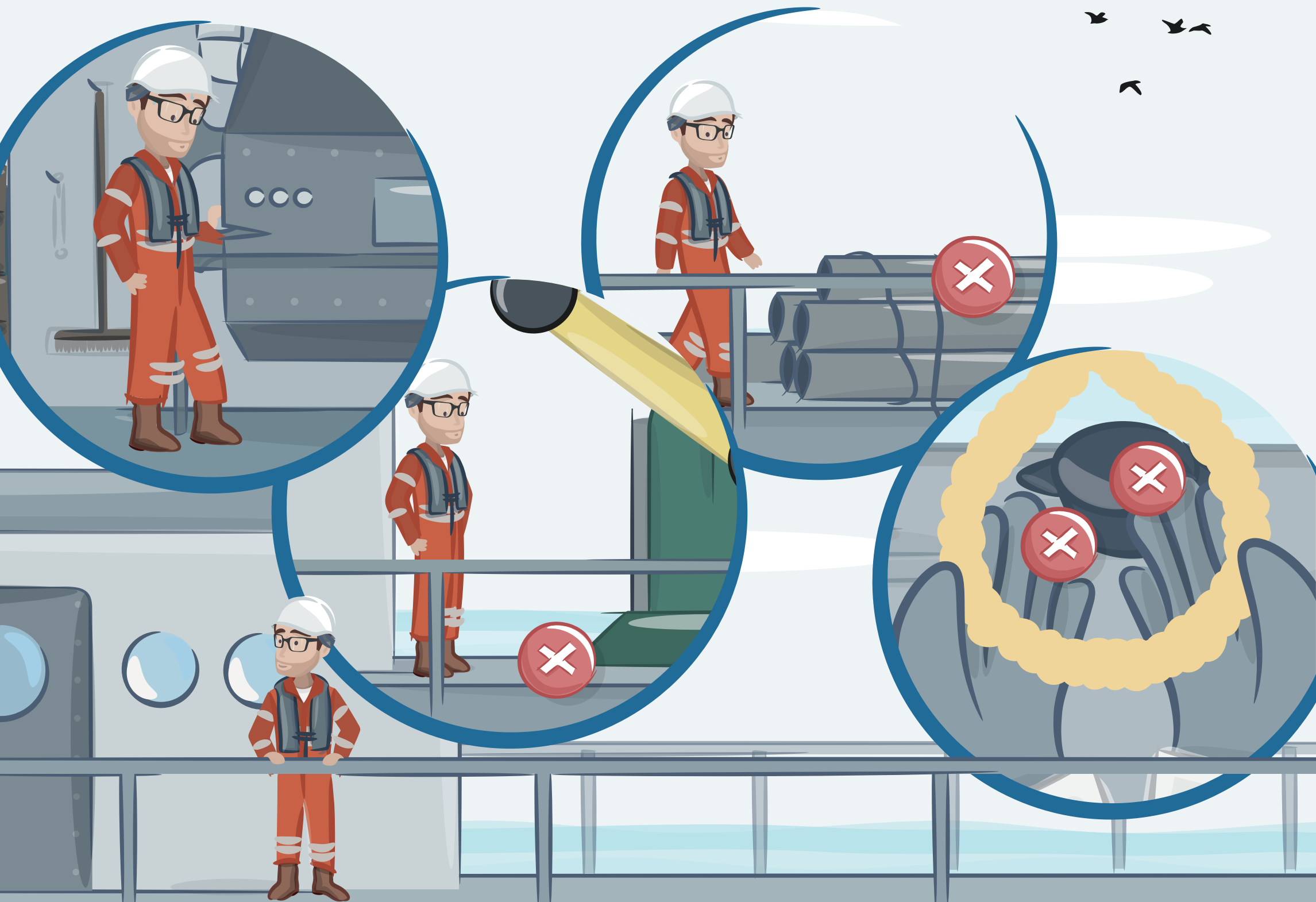


Risk 3

Becoming trapped



Working safely together

Source measures

Provide the correct shielding and the necessary safe control systems including emergency facilities (stopping installations, etc.).

Collective measures

Redirect employees around risky areas. Provide/apply the necessary alerts, and inform employees about possible risks in certain places.

Keep workplaces clean and tidy.

If applicable, provide the correct and, if necessary, certified tools.

Individual measures

Only use equipment/installations if these are secured and the necessary shields have been fitted. Do not wear loose clothing that can get stuck somewhere.

Avoid all places where becoming trapped is possible. Also consider mobile equipment for the latter.

PPE

Use the correct PPE.